

安装指南



Egebjerg Box

介绍	2
Measuring	3
Mounting	4
Mounting of side pieces	4
Front grille pipes or front gate	5
Front gate.....	6
Mounting of steel mangers.....	6
Mounting of steel mangers.....	7
Mounting of saloon gate.....	8
Water conduit	9
Water conduit	10
High water conduit.	11
Feed bin	12
At front grille pipes.....	12

Introduction

Start the mounting process by reading through the delivery note, packing note and casting drawing.

1.

The delivery note lists all components.

After each line listing a component type (e.g. a side piece) follows a section listing the bolts, discs, nuts etc.

required for the mounting of the listed component.

If for example a fitting is required, the delivery note will tell you how many you need as well as the product code of the fitting.

Now locate the fitting's product code on the packing note. Next to the product code on the packing note you will find the number of the box where you will find the fitting.

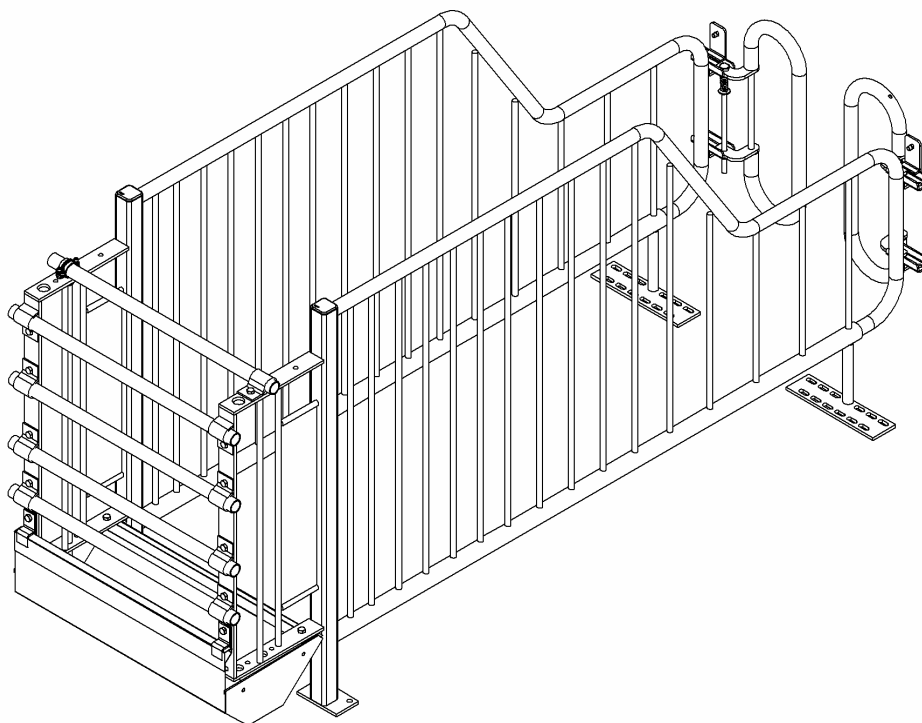
2.

Go through the drawing while looking at the delivery note and get an overview of the location of the different components.

3.

Tools required for mounting the components:

- Chalk line
- Measuring tape
- Drill with 9 mm drill bit and 12 mm concrete drill bit
- 10, 13, 17, 19, 21 mm spanner
- Side cutting nippers or similar tool
- Screwdriver
- Allen key



Measuring

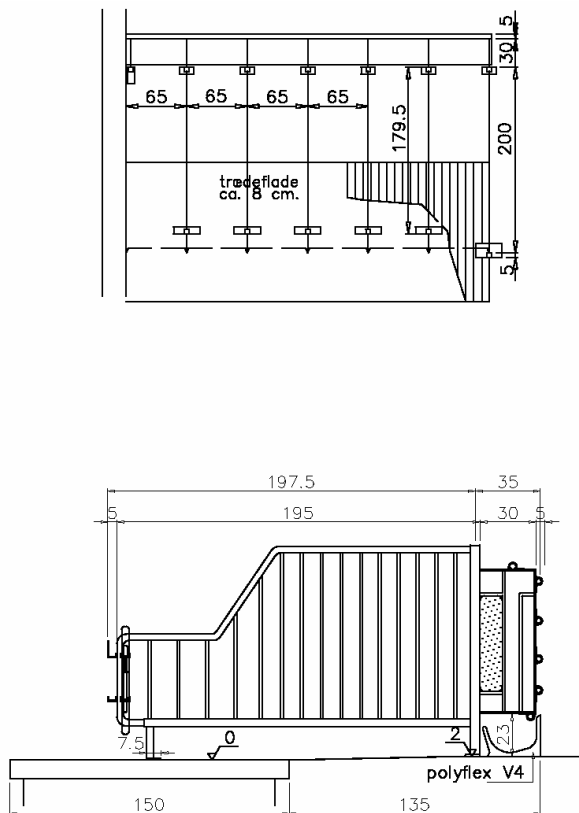
Before you start the mounting process, it is important to check that the measurements of the stable are met.

If any measurements are not met, this will create problems during the mounting process. It is therefore important that such errors are discovered at an early stage and that a decision is made on how to solve the problem.

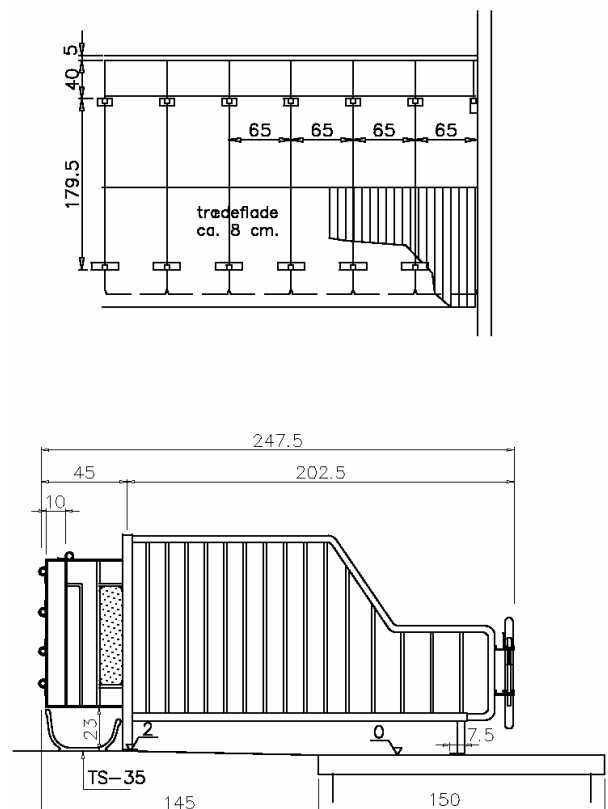
Check the following measurements:

A: Section width. B: Section length. C: Number of boxes.

Check that the number of boxes multiplied by 65 cm is less than or equal to the total length B!



Standard

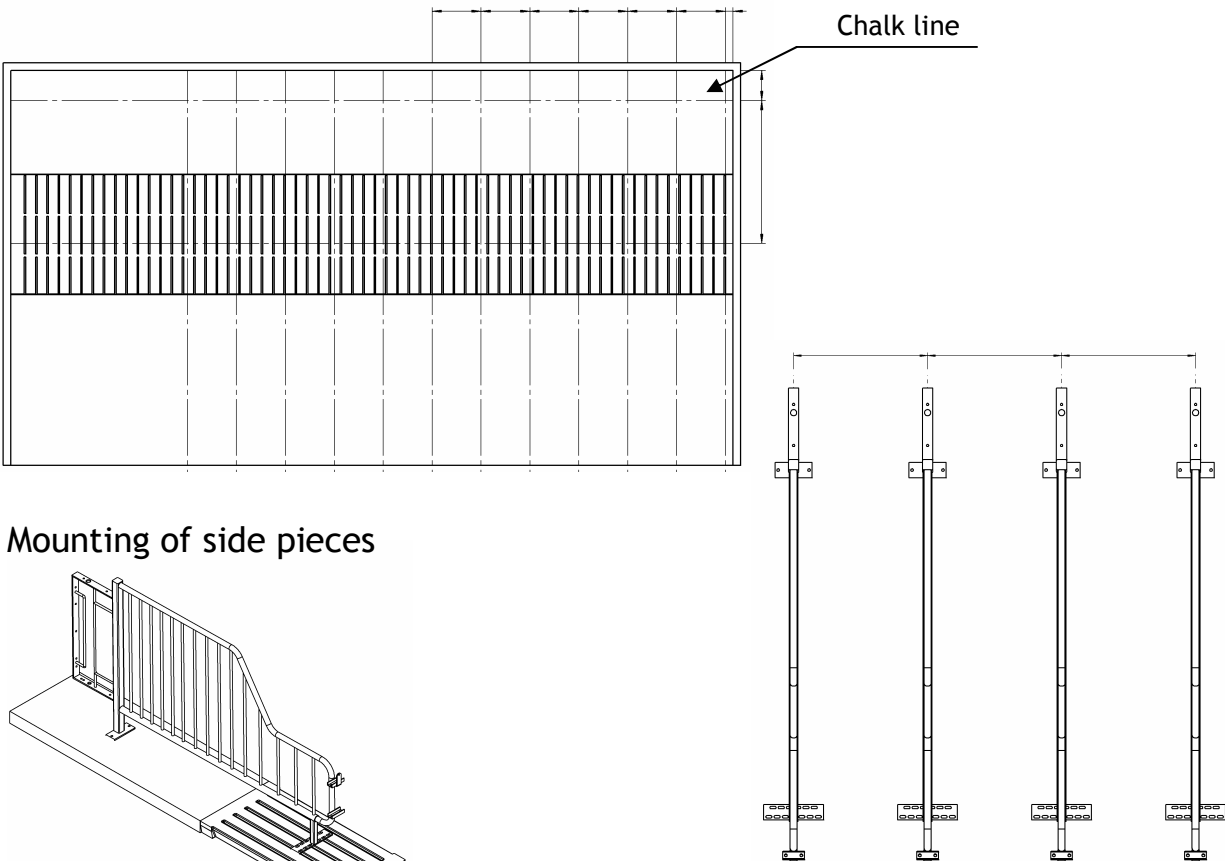


Ekstension 10 CM

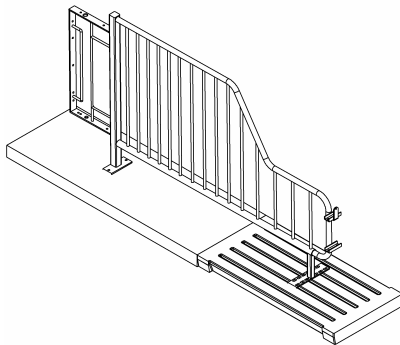
Mounting

Take measurements along the wall where the side pieces are to be placed and mark with a chalk line on the floor.

Also make markings for the front base plate to make sure that they are in line.



Mounting of side pieces

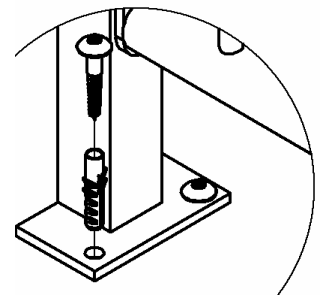
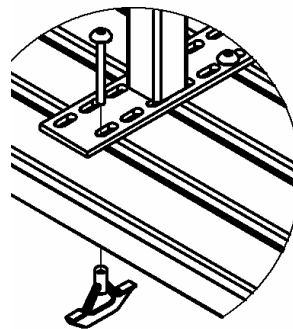


Bolt the outer side piece loosely to the floor. Place the next side piece at a distance of 65 cm measured

from the middle of the first post to the middle of the next post.
It is also important that the side pieces are plumb.

Place all the front posts along the chalk line. Bolt-
ing

Use 10x70 mm or 10x90 mm stainless torx screws and dowels for mounting on a concrete floor.
(Use T anchor with bolts or T-bolts for mounting on a slatted floor).



Front grille pipes or front gate

Front grille pipes

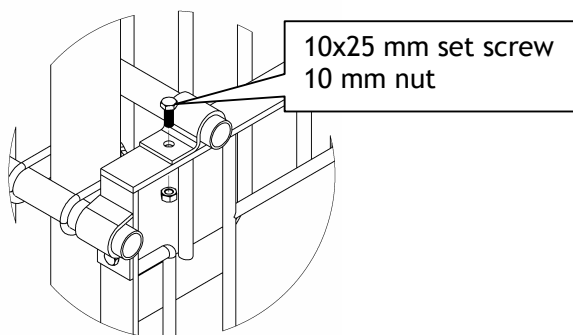
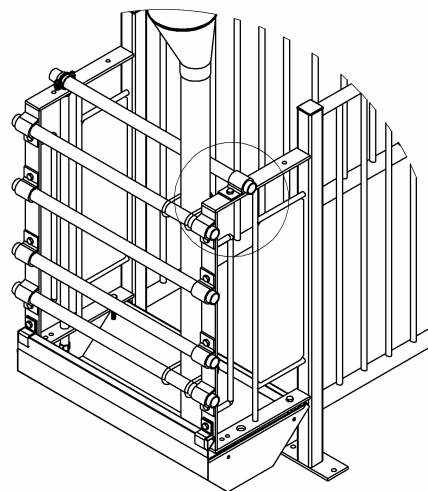
Depending on the arrangement, you may need additional or fewer front grille pipes.

As a general rule, you always need 5 1" pipes.

The top pipe can with advantage be used for conducting water and is mounted as shown on the drawing.

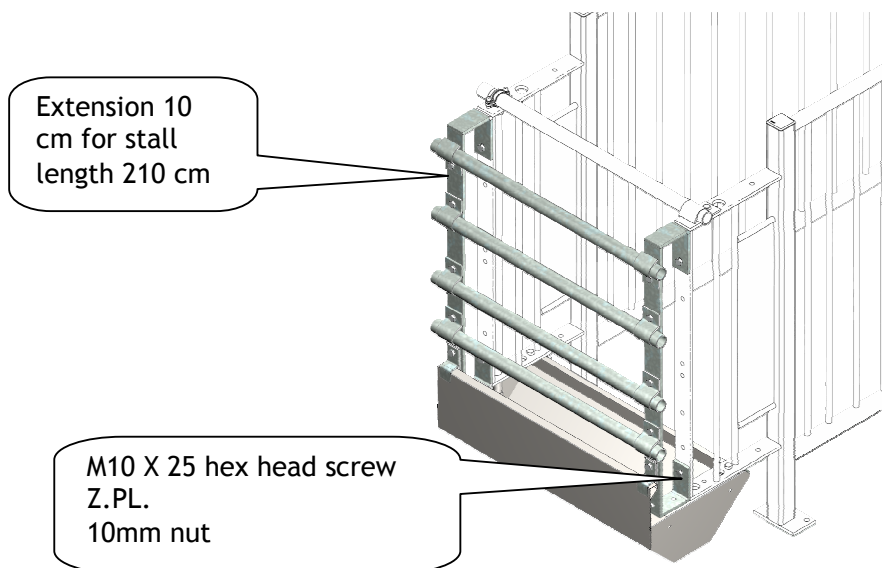
When mounting transverse front grille pipes, it is important to make sure that all side pieces are plumb. If necessary, use a cross measure to check if they slant.

If the box is mounted with stainless manger, the pipes must be placed as shown here.



The pipes are fixed with 1" pipeholders, 10x25 mm set screws and 10 mm nuts. Remember to fit plastic plugs at the ends of the pipes.

When the front pipe is used for conducting water, mark and drill holes for drill clamp with valve. See the section Water conduit.

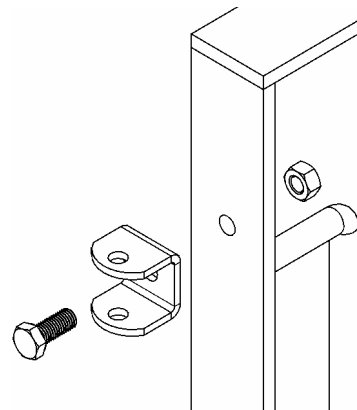
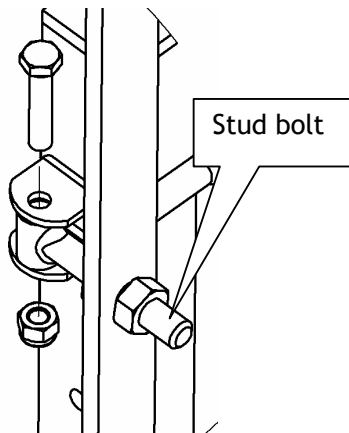
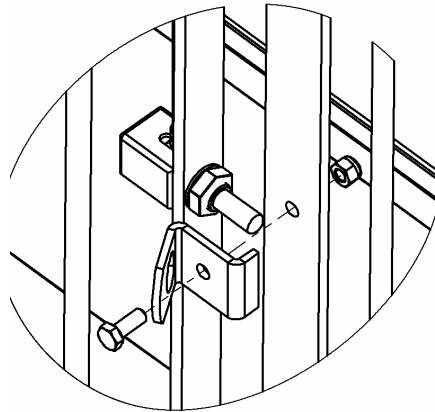
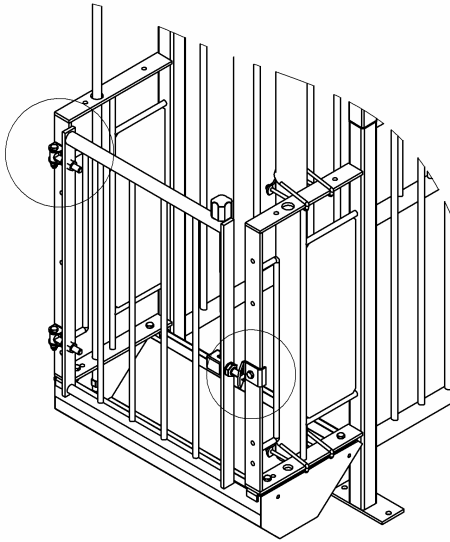


Front gate

Mount the front gate at the hinge side with 2 U-fittings plus bolt and lock nut.

Use 1 escutcheon plus bolt and lock nut for the lock.

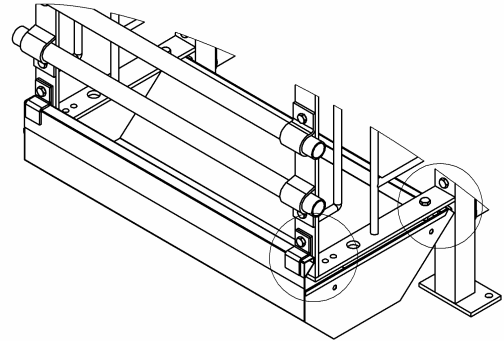
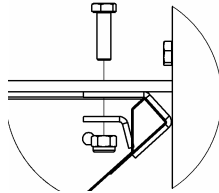
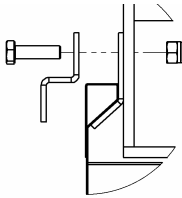
Check that the gate can be locked, otherwise adjust the stud bolts in the gate.



Mounting of steel mangers

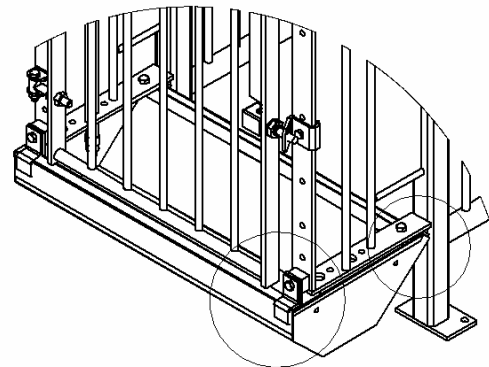
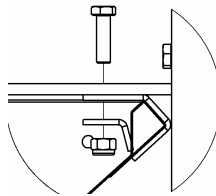
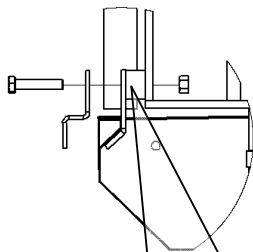
Steel mangers at front grille pipes

Fasten the manger on the front of and under the front grille as shown. Use 4 brackets plus 10x25 mm stainless bolt and lock nut.



Steel manger at front end

Fasten the manger under the front grille as shown. Use 4 brackets plus 10x25 mm stainless bolt and lock nut.

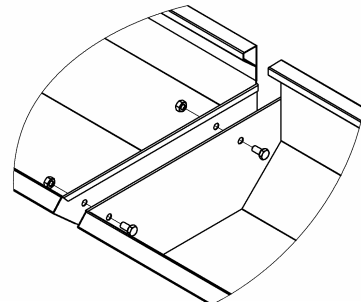
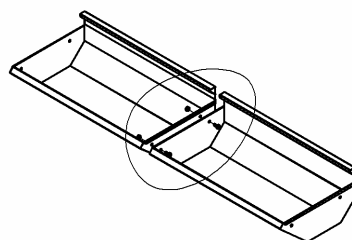


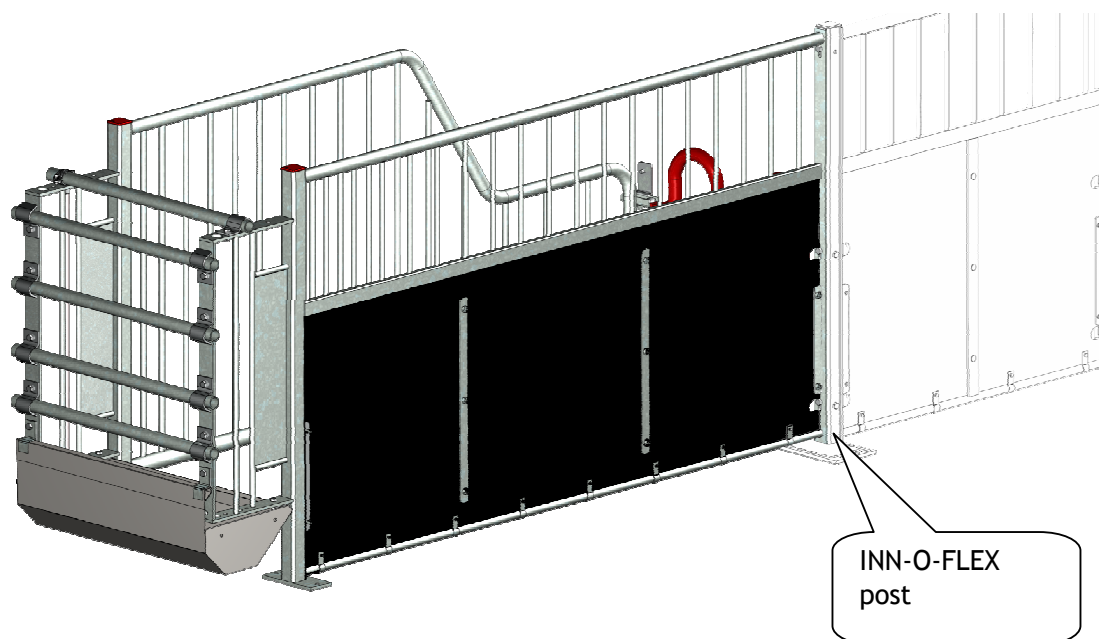
Spacer for trough bracket
300mm Fr. Gr.

Assemble the mangers by

bolting the end plates together using
8x16 mm stainless bolts and nuts.

Please note that these bolts and nuts must be stainless.

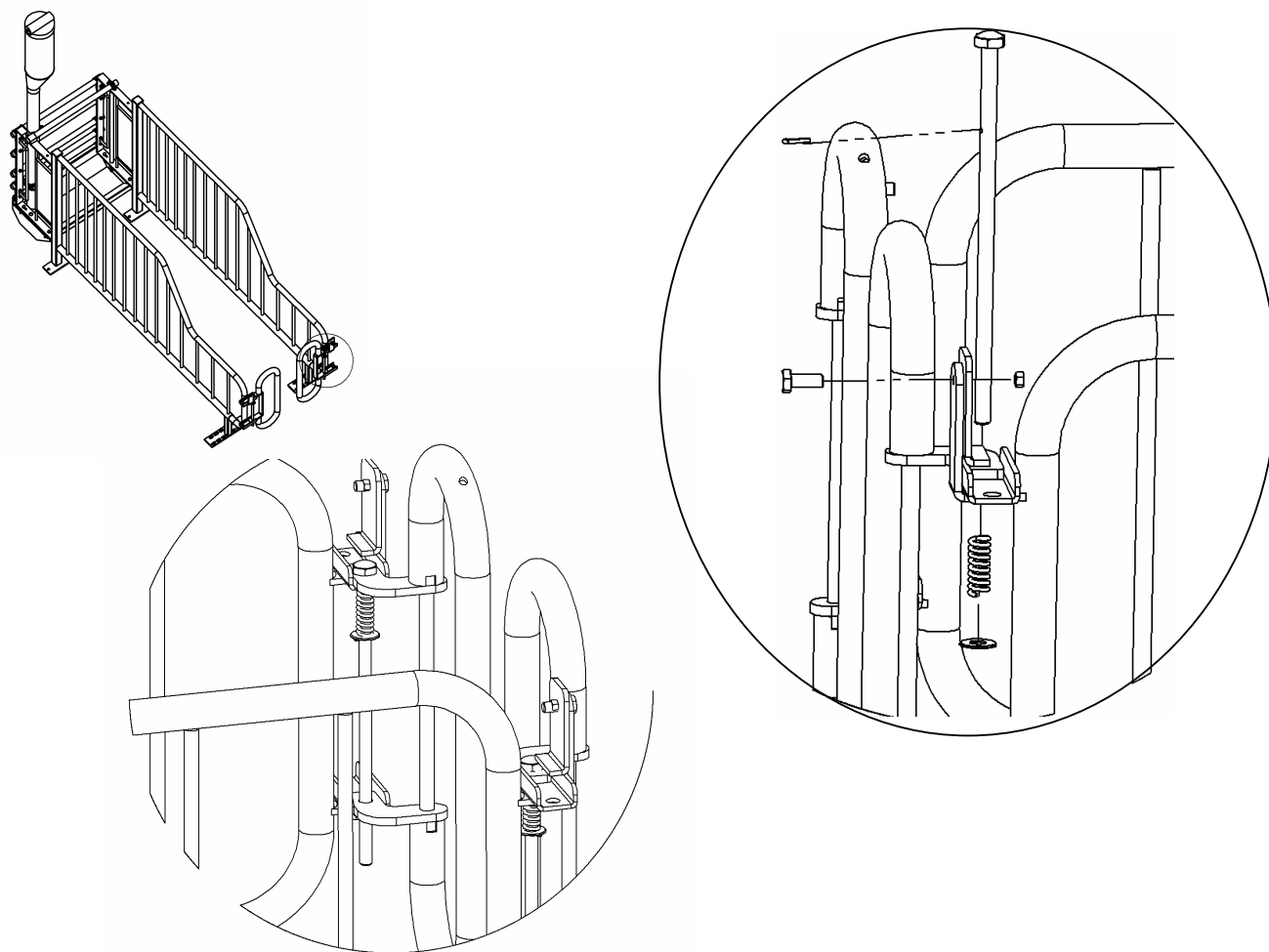




Mounting of saloon gate

Mount saloon gates as shown below.

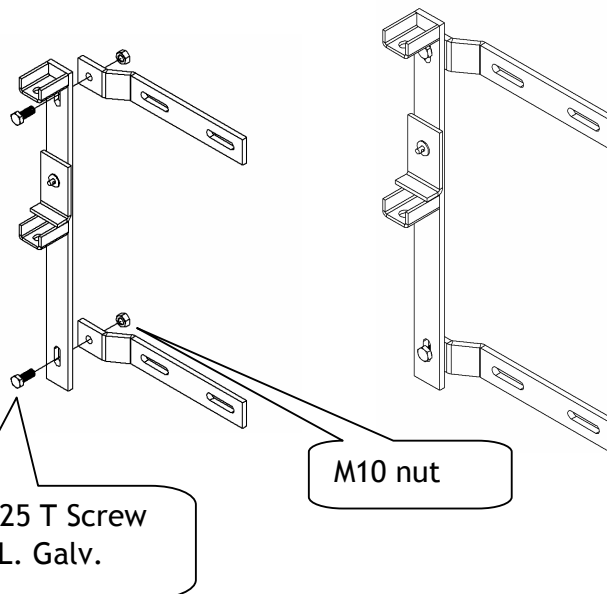
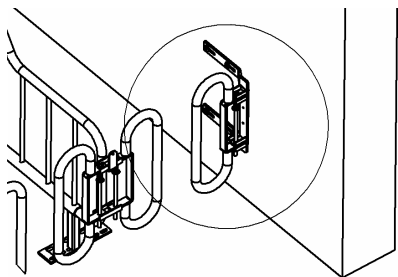
Look at the delivery note to see which bolts, nuts, plates etc. are required:



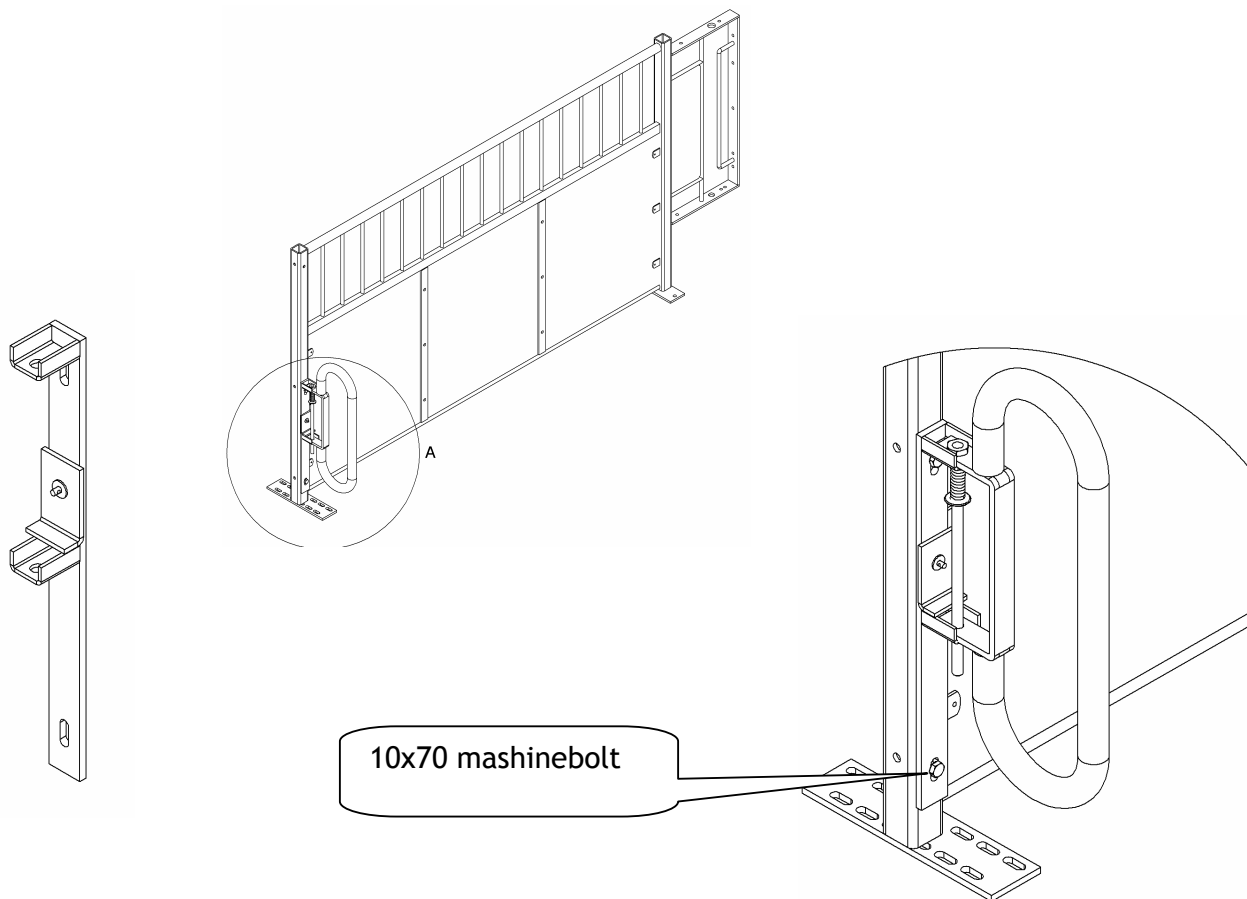
Gable fittings for saloon gate

Use a gable fitting to fix the saloon gate when the box is placed against a wall or an end box side with plate.

When the gate hangs on a wall, bolt the fitting to the wall with dowels and coach screws.

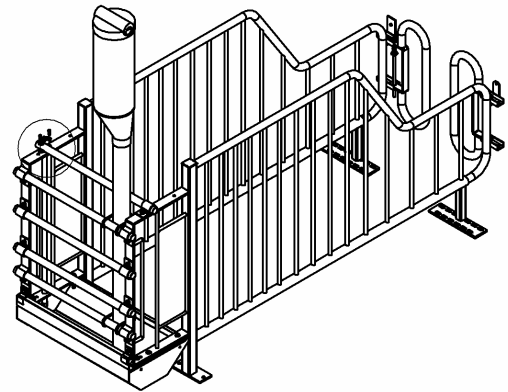
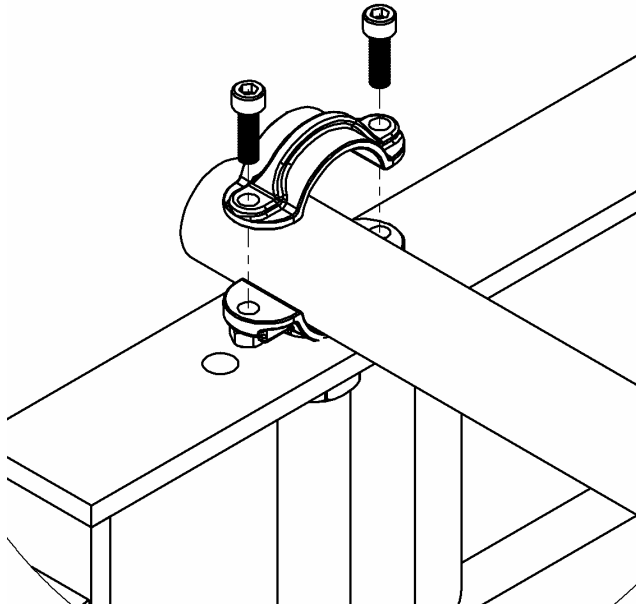


When the gate hangs on an end partition, bolt the fitting to the partition with the accompanying bolts and nuts.



Water conduit

The water pipe set consists of: 1/2" stainless pipe 83 cm long for stainless manger and 88 cm long for concrete manger, drill clamp and valve. Mount one set for two sows.

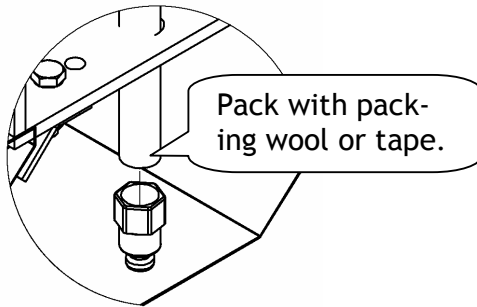


Drill a hole 9 mm in diameter for the drill clamp. Fix this to the water pipe.

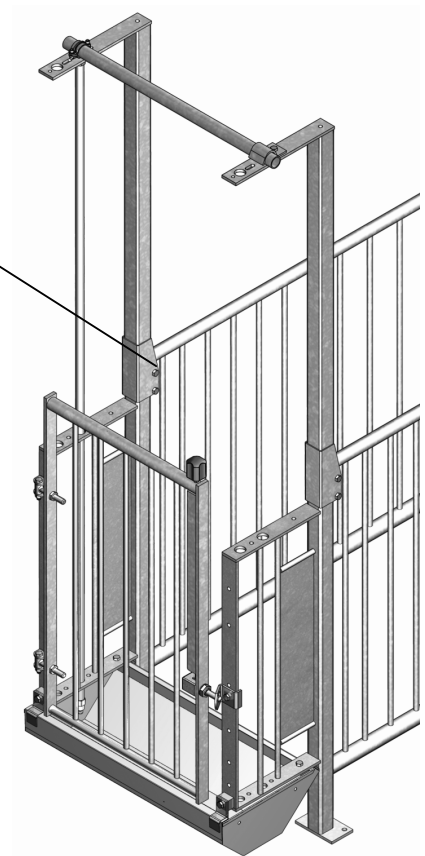
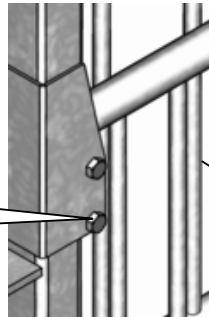
Note:

Do not mount the water valve until the entire water system has been flushed through thoroughly.

Then pack the water valve and mount it on the stainless pipe.



10x70 Mashinebolt
M10 nut Z.PL.



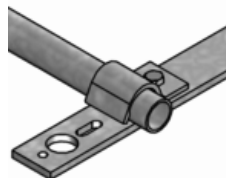
High water conduit.

At the front end, a high water conduit is usually chosen.

Use post extensions of 106.5 cm to achieve a pipe height of 216 cm. Mount the post extensions as shown on the drawing.

The water pipe set consists of: ½" stainless pipe 119 cm long for stainless manger and 204 cm long for concrete manger, drill clamp and valve. Mount one set for two sows.

Fix water pipe with 1" pip retainer.



Feed bin

At the front end

Mount the feed pipe with special straps that fit around the side of the front grille.

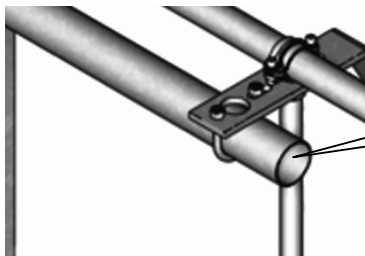
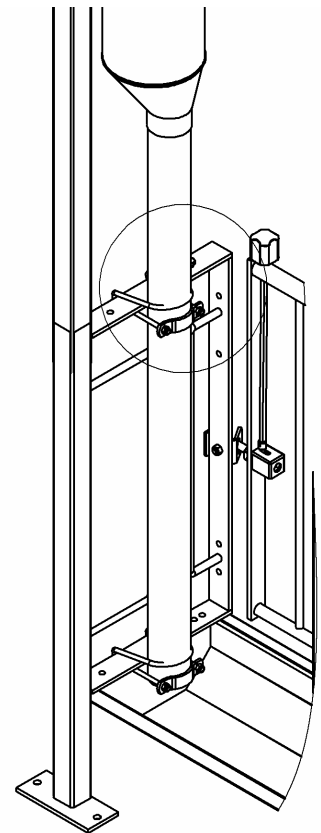
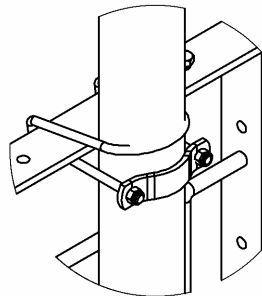
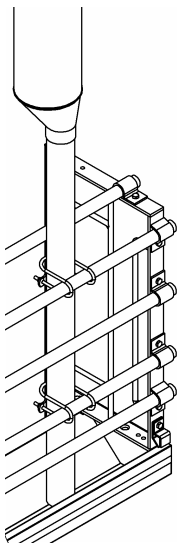
Mount the feed bin on top of this pipe.

Now attach the feed bin to the actual feed string, which traverses the box.

Fasten the straps to the front grille and mount the feed string itself on the box with a U-strap.

At front grille pipes

Mount the feed pipe with special straps that fit around the transverse front grille pipes.



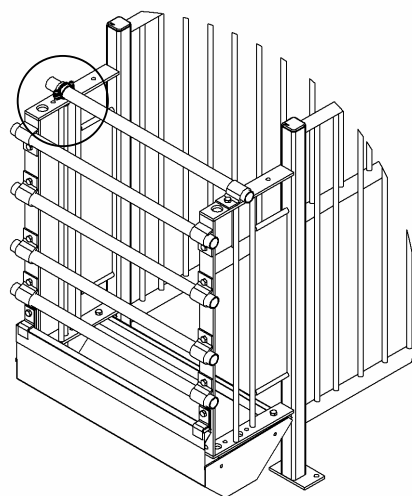
The feed pipe

Maintenance Mating Box

Front pipes

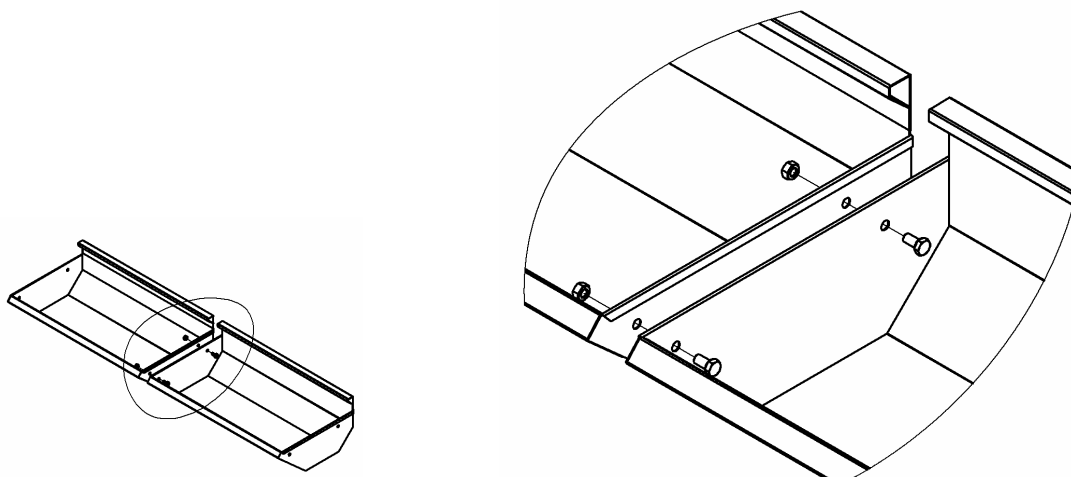
Bolts and nuts must be inspected and tightened every 6 months.

Hinges and brackets must also be adjusted and tightened every 6 months.



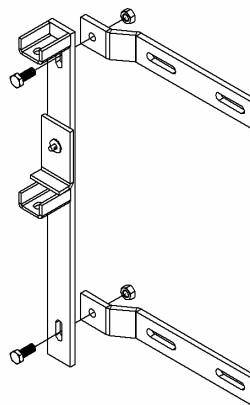
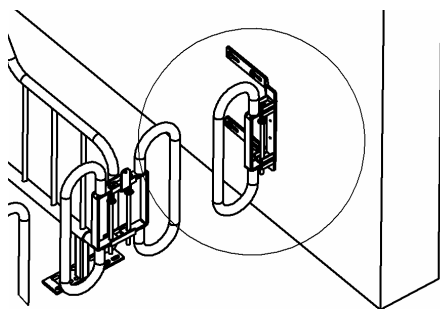
Stainless steel troughs

Fixing of stainless steel troughs must be inspected and tightened once every year.



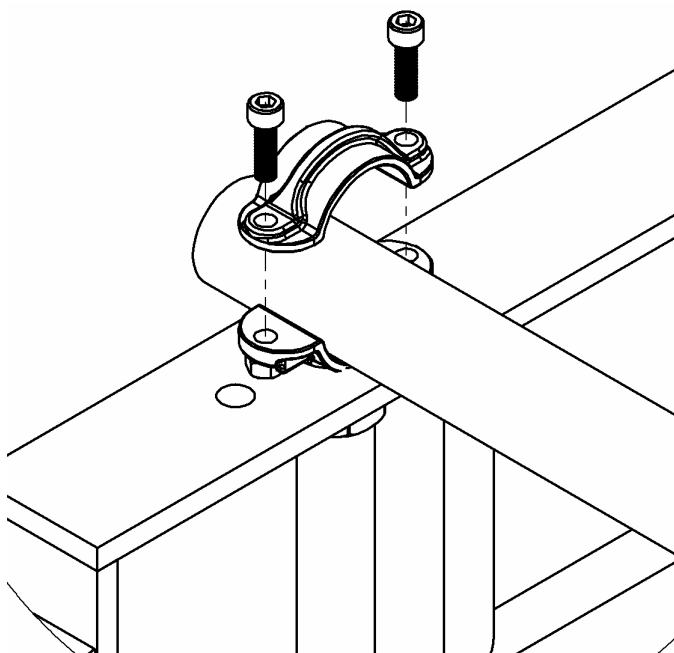
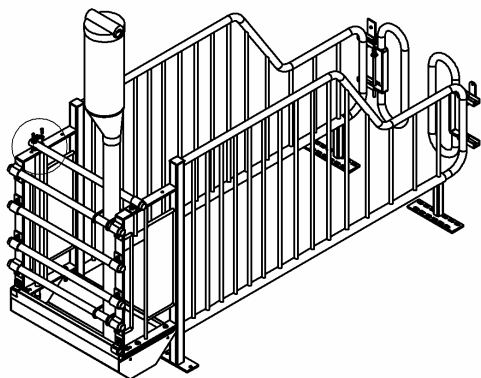
Saloon gates

Front brackets must be inspected, adjusted and tightened once every year.



Water piping

The drill clamps must be inspected for leakages once every year.



Notes

